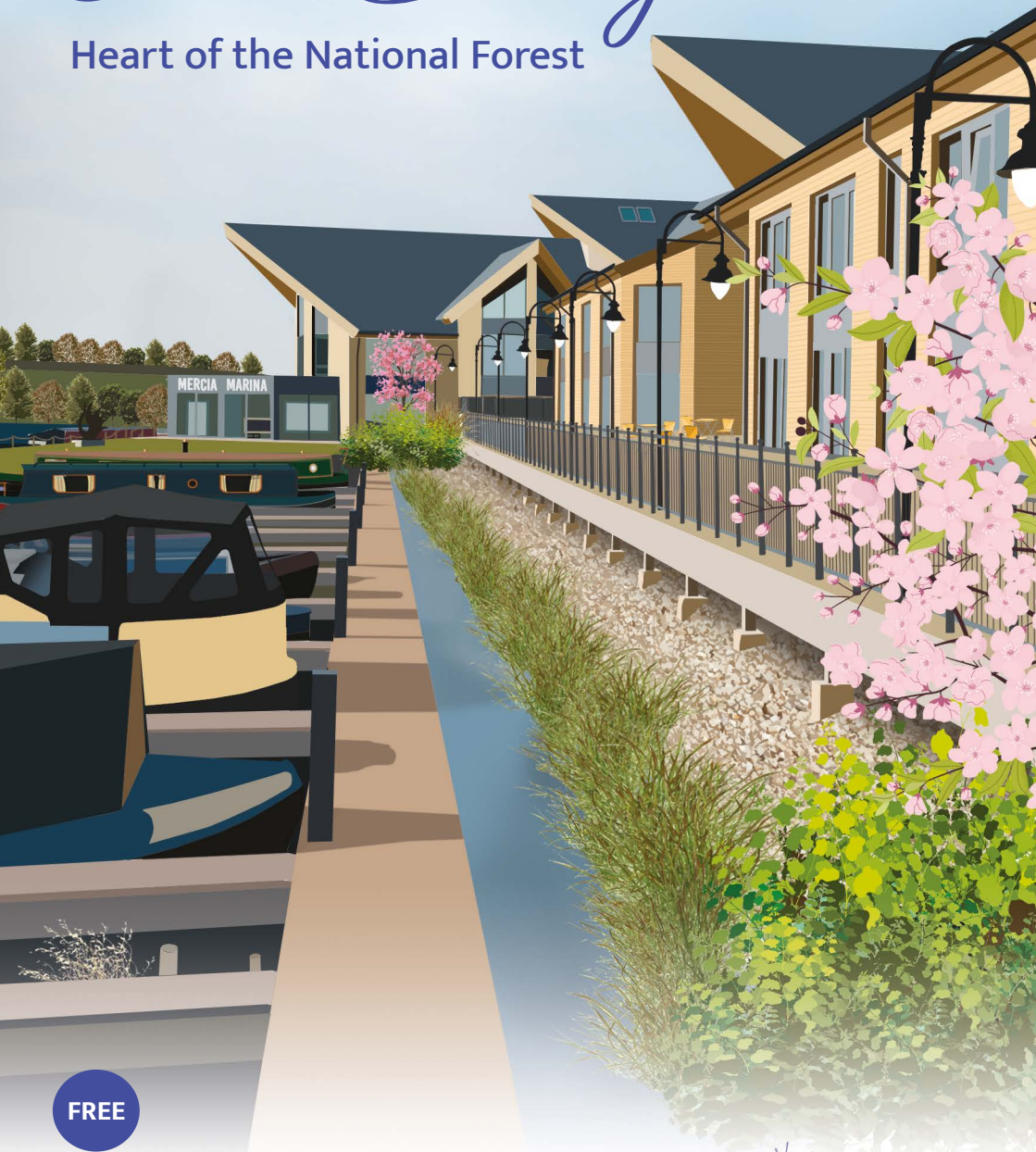


ATTRACTIONS GUIDE

South Derbyshire

Heart of the National Forest



FREE

www.visitsouthderbyshire.co.uk

Visit
SOUTH DERBYSHIRE

WELCOME

to South Derbyshire

Heart of the National Forest



Rooted in the heart of the country, the National Forest spans 200 square miles, around a third of which is in South Derbyshire. It links the two ancient forests of Charnwood and Needwood with a connected treescape of new woodlands, meadows, hedgerows and water. Recognised as one of the Country's boldest environmental projects, nearly 10 million trees have been planted over the last thirty years.

On a visit to South Derbyshire, you can explore the area's many attractions, from famous stately homes and gardens, to fascinating heritage and visitor centres. There are activities, experiences

and events for all ages and tastes, from adventure playgrounds and alpine tobogganing, to paint-a-pot and forest bathing.

Our historic towns, villages and marinas are home to independent retailers, artists and crafters. Our award-winning restaurants, pubs, cafés, farm shops and delicatessens offer fabulous local produce.

Why not come and stay? South Derbyshire offers a great range of accommodation, from camping and glamping, to forest lodges and cosy cottages, and luxurious inns and hotels.



MELBOURNE

A beautiful Georgian town, Melbourne has a long and notable history and was recorded in the Domesday Book. Melbourne Hall was the home of Queen Victoria's first Prime Minister William Lamb who, as second Viscount Melbourne, gave his name to the Australian city of Melbourne. The spectacular gardens were laid out by the Rt. Hon. Thomas Coke.

Melbourne today is a haven of superb restaurants, pubs and cafés, together with a wealth of shopping opportunities including galleries, antique shops, specialist clothes stores, gift shops and local produce. The town has more than fifty restaurants and shops split between the town centre and the Courtyard at Melbourne Hall.

REPTON & WILLINGTON

The two villages are separated by the River Trent. To the south is Repton, former capital of the Anglo Saxon 'Kingdom of Mercia', now a fusion of village and public school. St Wystan's Church is of national importance – under the east end is an Anglo-Saxon crypt from the 8th and 9th Centuries, which once held the bones of St. Wystan and was a place of pilgrimage. The crypt is one of England's most precious surviving examples of Anglo-Saxon architecture. The village's Georgian buildings feature handsome houses and a number of excellent eateries.

The arrival of the railways began the transition of the Trent & Mersey Canal through Willington to a new role as a leisure destination. The village centre and nearby Mercia Marina are home to numerous tea rooms, restaurants, pubs and

bespoke shops. Set within 74 acres of landscaped grounds, Mercia is the UK's largest inland marina. Nearby Willington Wetlands nature reserve features beavers, thanks to a reintroduction programme.



SWADLINCOTE

Famous for its rich pottery and mining heritage, Swadlincote is known for the blue and white kitchenware 'Cornishware', formerly manufactured by the TG Green pottery. The town's traditional high street stores are complemented by 'The Pipeworks', an adjoining retail and leisure complex, which includes a cinema and food outlets. Vintage shops with unique gifts and interior furnishings are a speciality along with the town's regular and speciality markets.

Leisure time is well-catered for, with a snowsports centre, Sharpe's Pottery Museum and the Magic Attic Archive, family golf centre, and a leisure centre including a climbing wall. The town's Victorian parks and more recently planted woodlands feature play areas, sports facilities and walking trails.

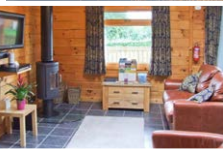
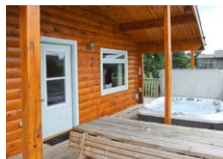
Explore the towns and villages of South Derbyshire at:
www.visitsouthderbyshire.co.uk

Places to Stay

Leafy lodges, luxurious gastro pubs, glamorous glamping or a cosy bed and breakfast – take your pick from our collection of places to stay. We even have amazing eco-friendly horseboxes or e-bike holidays if you are feeling adventurous!

A lodge is the perfect choice if you like to come and go as you please, with no fixed times for meals and the choice of places to eat – alternatively we have lots of local produce, farm shops and micro-breweries if you like to do-it-yourself. There is always plenty of space to relax (sometimes a hot tub) and you can often bring your four-legged friends along too!

Prefer to be pampered? Choose a gastro-pub where you will benefit from a warm and friendly welcome, tasty meals on hand and a short stroll to your comfortable night's sleep.



Best of both worlds? Our bed and breakfasts offer comfortable, en suite accommodation, a warm welcome and a hearty breakfast to start your day. Being local residents themselves, your hosts will be full of ideas and suggestions for places to visit and things not to miss during your stay.

Best Western, Days Inn by Wyndham, Ibis and Premier Inn are all represented in the area. Together with the Newton Park Country House Hotel they offer easy access to the delights of the National Forest and Peak District National Park and convenient stopovers for East Midlands Airport and Donington Park race circuit at the centre of the national road network.

A T T R A C T I O N S

KEY

- Car parking
- Disabled parking
- Toilets
- Disabled toilets
- Dogs allowed on lead
- Hearing loop
- Baby changing facilities
- Step free access
- Green flag award
- Assistance dogs allowed



A.R.D. Birds of Prey, Rosliston

07565 007570 | <https://ardbirdsofprey.com>

Rosliston Forestry Centre, Burton Road, Swadlincote, DE12 8JX

Make memories with a thrilling, hands-on falconry experience that is fun and informative for all ages, with expert owl and hawk encounters. Booking essential. No dogs allowed.



Bluebell Arboretum and Nursery, Smisby

01530 413700 | www.bluebellnursery.com

Annwell Lane, Smisby, LE65 2TA

This beautiful nine-acre Royal Horticultural Society Partner Garden has a large collection of rare and unusual trees and shrubs, with plant nursery sales and expert advice.



Calke Abbey, National Trust

01332 863822 | www.nationaltrust.org.uk/calke

Main Street, Ticknall, DE73 7LE

The story of a once-grand country house unfolds through peeling paintwork, abandoned rooms and the extraordinary Harpur Crewe family collections, with gardens and parkland to explore.



Chapmans Nurseries, Rosliston

01283 543546 | <https://chapmansplants.wpengine.com>

Burton Road, Rosliston, DE12 8JX

This nursery is over 80 years old and, nestled in 12 acres of woodland, focuses on the sale of plants and plant-growing essentials, all backed up by friendly, expert advice.



Tracks & Trails

The best way to explore the area is on foot, by bike or even on the 'hoof' – you can bring your horse on holiday as we have some great equestrian centres! Grab your walking boots, trainers or wellies and set off on an adventure – you can even try your hand at orienteering or geocaching.

Our tracks and trails will lead you up hill and down dale, through peaceful parks and nature reserves, along bustling canal towpaths, by reservoirs and waterways, allowing you to explore the story of our fascinating heritage first-hand. Why not seek out the rock-hewn dwelling known as Anchor Church or the ancient monument of Swarkestone Causeway?

The National Forest Way is a 75-mile linear path linking the ancient forests of Charnwood in the east and Needwood in the west. Along the way you'll discover the area's evolution from a rural landscape, through industrialisation, to the modern-day creation of a new forest. There are also many shorter walks, great for exploring the Forest, and often accessible to all.

For the cyclist, however experienced, there are on and off-road trails, with cycle hire available at a number of locations. The Cloud Trail, passing through Melbourne and following canal paths and a former railway, is possibly the best known. Route 63 of the National Cycle network links Swadlincote with Conkers in the heart of the National Forest.



The Horseshoe Trail

The Cloud Trail

Trent & Mersey Canal

Swarkestone Causeway

Maurice Lea Memorial Park



Clary Meadows Alpacas, Burnaston

07545 778808 | www.clarymeadowsalpacas.co.uk
Green Lane, Burnaston, DE65 6LH

Alpaca farm offering personal walks and feeding experiences so that you can truly appreciate and learn about these wonderful, gentle animals. Booking essential. No dogs allowed.



Claymills Victorian Pumping Station, Stretton

01283 509929 | www.claymills.org.uk
Meadow Lane, Stretton, DE13 0DA

Restored Victorian sewage pumping station constructed in the late 1800s with four giant steam-powered beam engines that served the breweries in the area.



Conkers Discovery Centre, Moira

01283 216633 | www.visitconkers.com
Rawdon Road (B586), Moira, DE12 6GA

Explore 120 acres including the barefoot walk, adventure play and the fairy labyrinth outdoors, and delve into the life of a British woodland with over 80 indoor interactive exhibits.



Creative Melbourne Gallery & Studios

07765 819428 | www.creativemelbourne.co.uk
Wellington House, Church Street, Melbourne, DE73 8EJ

A hub for the creative arts in the area, the Gallery features regularly changing themed exhibitions showcasing work for sale by regional artists, and hosts resident artists and workshops.



Explore South Derbyshire's parks, tracks and trails at:
www.visitsouthderbyshire.co.uk

Explore more attractions in South Derbyshire and beyond at:
www.visitsouthderbyshire.co.uk



Dobbies Garden Centre, Findern

01332 514268 | www.dobbies.com/derby
Burton Road, Findern, DE65 6BE

Everything you need to enjoy your home and garden from flowers and plants to tools, garden furniture and homewares, with an on-site restaurant and soft play.



Etwall Leisure Centre

01283 735404
www.everyoneactive.com/centre/etwall-leisure-centre
Hilton Road, Etwall, DE65 6HZ

With a spacious gym packed with all the latest fitness equipment, alongside a swimming pool, sports hall and 3G artificial pitch, the Centre offers a variety of indoor and outdoor activities.



Donington Park Circuit, Castle Donington

01332 810048 | www.donington-park.co.uk
Castle Donington, DE74 2BN

Internationally-renowned motor racing venue hosting national and international races and events, from superbikes and touring cars to music festivals and driving experiences.



Ferrers Centre for Arts and Crafts, Staunton Harold

01332 864863 | www.ferrerscentre.co.uk
Staunton Harold, LE65 1RU

A community of makers, artisans and creatives located in a Georgian stable block – wander through the studios and discover the artists, garden centre, restaurant and café.



East Midlands Aeropark, Castle Donington

01332 850591 | www.eastmidlandsaeropark.org
Hill Top, Castle Donington, DE74 2PR

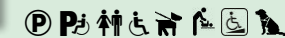
Outdoor aviation museum and viewing area overlooking East Midlands Airport, where you can see modern aircraft taking off and landing and preserved planes of yesteryear.



Foremark Reservoir, National Trust

01332 863822 | www.nationaltrust.org.uk/foremark
Foremark, Milton, DE65 6EG

230 acres of woodland, heath and open water invite you to explore the rhythms of the natural world, with trails, play area and café - for fresh-air adventure.



Elvaston Castle and Country Park

01629 533870 | www.derbyshire.gov.uk/elvaston
Borrowash Road (B5010), Elvaston, DE72 3EP

321 acres of parkland, woodland and lake, including Elvaston Castle, a gothic revival masterpiece with formal gardens, and the setting for events and outdoor activities.

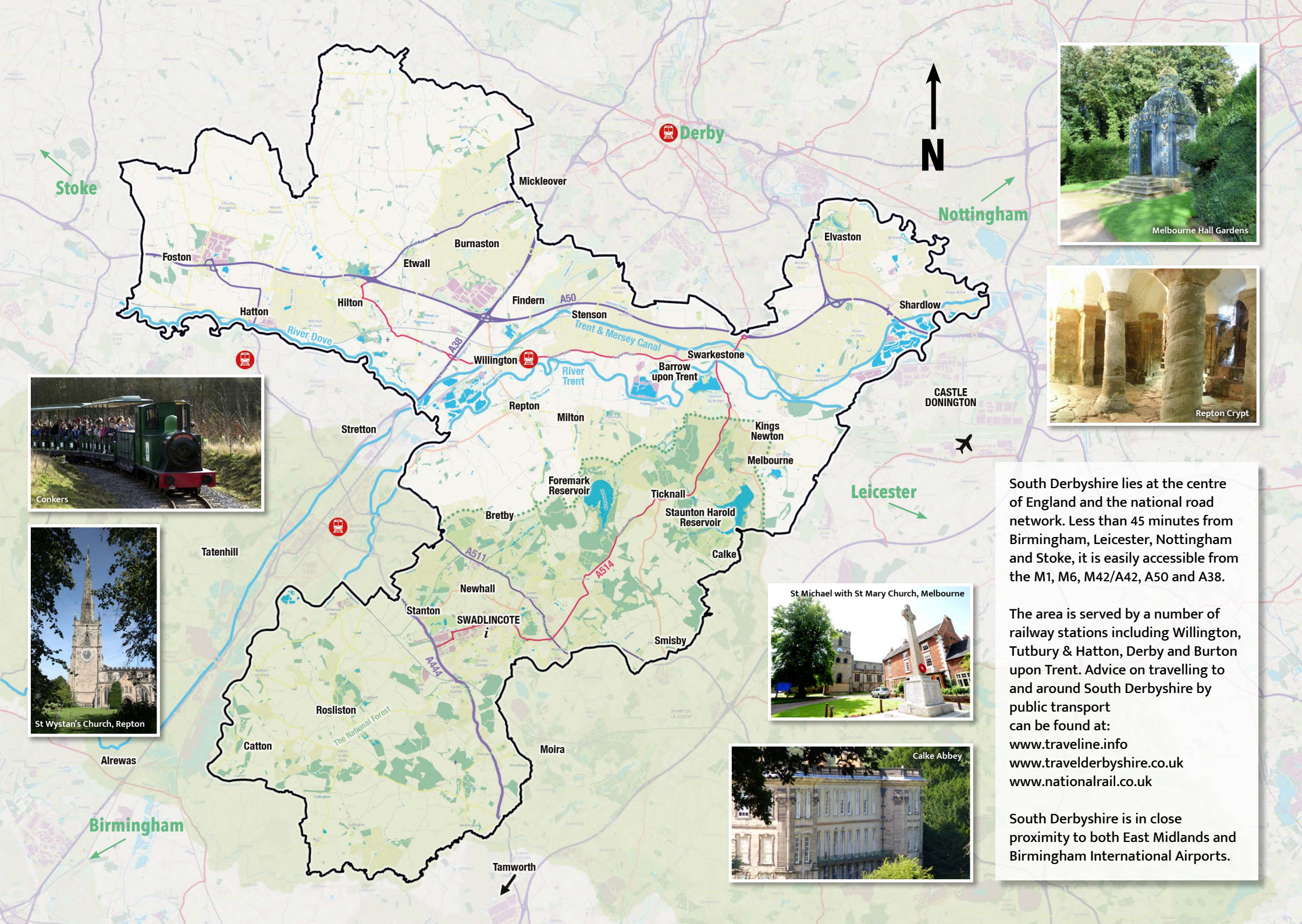


Garden King, Newhall

01283 550516 | www.gardenking.co.uk
Park Road, Newhall, Swadlincote, DE11 0TX

Garden centre with woodland-themed soft play, restaurant, undercover mini golf and role play village where you can let your children's imagination run wild.





Stoke

Nottingham



Melbourne Hall Gardens



Repton Crypt



Conkers



St Wyan's Church, Repton

Birmingham

Leicester

South Derbyshire lies at the centre of England and the national road network. Less than 45 minutes from Birmingham, Leicester, Nottingham and Stoke, it is easily accessible from the M1, M6, M42/A42, A50 and A38.

The area is served by a number of railway stations including Willington, Tutbury & Hatton, Derby and Burton upon Trent. Advice on travelling to and around South Derbyshire by public transport can be found at:
www.traveline.info
www.travelderbysire.co.uk
www.nationalrail.co.uk

South Derbyshire is in close proximity to both East Midlands and Birmingham International Airports.

St Michael with St Mary Church, Melbourne



Calke Abbey



Green Bank Leisure Centre, Swadlincote

01283 216269
www.everyoneactive.com/centre/green-bank-leisure-centre
Civic Way, Swadlincote, DE11 0AD

Leisure centre with a swimming pool, exercise studio, fitness classes, cycling studio, well-equipped gym and sports hall, plus a sixteen-station indoor climbing centre.



Mercia Swan Canal Boat Trips, Willington

07763 907639 | www.boat.st
Mercia Marina, Findern Lane, Willington, DE65 6DW

Step aboard the Mercia Swan, for a relaxing journey through the Derbyshire countryside on the Trent & Mersey Canal, travelling to Stenson and Willington.



Jangala Soft Play Centre, Hilton

01283 736199 | www.jangalasoftware.com
Hilton Business Park, The Mease, Hilton, DE65 5UR

Play and party centre for toddlers to tens with café, featuring a large play frame with slides, rope bridges and slopes, alongside a toddler hut and soft play spaces. Booking advised.



National Forest Adventure Farm, Tatenhill

01283 533933 | www.adventurefarm.co.uk
Tatenhill, Staffordshire, DE13 9SJ

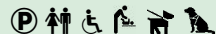
Enjoy a day of exciting indoor fun, outdoor adventure and farm animals, with a huge soft play area, Farmular One pedal go karts, mini assault course, musical maze, café and much more.



Melbourne Hall and Gardens

01332 862502 | www.melbournehall.com
Church Square, Melbourne, DE73 8EN

Visit the best-surviving gardens in the manner of Le Notre to be seen in England today, alongside the Courtyard of food, drink and craft businesses.



National Memorial Arboretum, Alrewas

01283 245100 | www.thenma.org.uk
Croxall Road, Alrewas, DE13 7AR

The nation's year-round place of remembrance, where the 150-acre arboretum forms a living landscape and home to more than 400 memorials, with land train tours and café.



Mercia Marina Village & Park, Willington

01283 703332 | www.merciamarina.co.uk
Findern Lane, Willington, DE65 6DW

Europe's largest inland marina is a unique blend of boating, dining, nature walks, waterside lodges and boutique shopping, including the Bluebird Fine Art gallery.



Odeon, Swadlincote

0333 014 4501 | www.odeon.co.uk/cinemas/swadlincote
Coppice Side, Swadlincote, DE11 9FQ

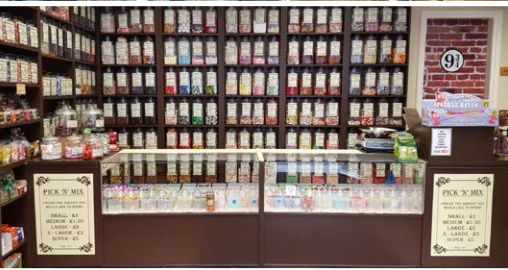
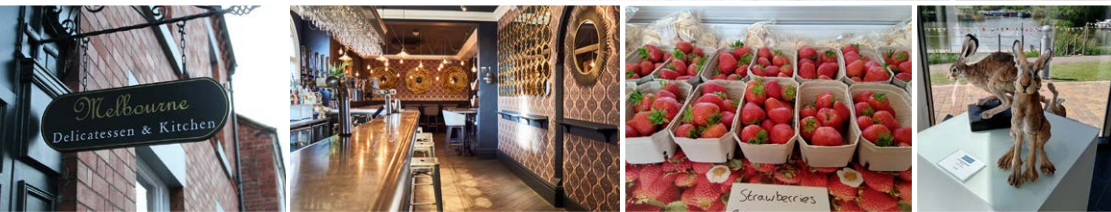
Five screens of film magic showing stunning RealD 3D to take you on a cinematic journey, accompanied by the food & drink outlets of The Pipeworks.



Eat, Drink & Shop

A feast of options await you, from 'light-bite' cafés and tea-rooms, to traditional and gastro pubs. Locally grown ingredients are used far and wide, so you are assured of quality and freshness from supplier to plate, and minimal food miles.

The area's farm shops include Heaths of Melbourne, Newlands at Hilton, Betty's Farm near Willington and Watergo Farm in Mickleover, plus the award-winning Tori & Ben's at Kings Newton. Fantastic local produce can also be found at the traditional butchers, bakeries and delicatessens in Hilton, Melbourne and Swadlincote. The Courtyard at Melbourne Hall is home to Pierre Hourlier Wines and Stable Ales, stocking the finest ales from around the world.



Award-winning wines are to be found at the Sealwood Estate and Scaddows Farm vineyards, which also offers 'Pick-Your-Own' strawberries and other fruit. There are several micro-breweries, including Boot Beer, Leatherbritches Brewery and the Spirit Vaults, plus Tollgate Brewery, producers of the National Forest Real Ales. On the historic Catton Estate you will find the Double R micro-distillery producing rum, gin and liqueurs using local ingredients. Why not indulge in a visit to the distillery school, a wine tasting, or a vineyard or brewery tour?

South Derbyshire offers a huge range of experiences from CAMRA-rated real ale pubs to award-winning restaurants serving international cuisine. For something different try the Boat Street café at Mercia Marina, or the 50s American Diner in Swadlincote, an original American dining car featuring authentic American fare.



Planters Bretby Garden Centre

01283 703355 | www.plantersgc.com

Bretby Lane, Bretby, DE15 0QS

Everything you need for your garden and home with a wonderful selection of flora and fauna, alongside a restaurant, play areas, gifts and homewares, aquatics and pet store.



Rosliston Forestry Centre

01283 563483 | www.roslistonforestrycentre.co.uk

Burton Road, Rosliston, DE12 8JX

A woodland haven to explore on foot or cycle offering outdoor activities and family fun, including an adventure play area, bird hides, visitor centre, café and overnight accommodation.



St Wilfrid's Church, Barrow upon Trent

07887 656948 | www.stwilfridsbarrow.org

Church Lane, Barrow on Trent, DE73 7HB

The fascinating Medieval history of this beautiful stone church, that was an outpost for the Knights Hospitallers of St John, has recently been uncovered – a true time-capsule.



Sharpe's Pottery Museum, Swadlincote

01283 222600 | www.sharpespotterymuseum.org.uk

West Street, Swadlincote, DE11 9DG

Fascinating social history museum exploring the area's transformation from mining and ceramics industries to the creation of the National Forest, with a bottle kiln and café.



Explore great food and drink in South Derbyshire at:
www.visitsouthderbyshire.co.uk

Explore more attractions in South Derbyshire and beyond at:
www.visitsouthderbyshire.co.uk



Shardlow Inland Port and Heritage Centre

www.shardlowheritage.co.uk

Canalside, London Road, Shardlow, DE72 2GA

Considered the country's most complete surviving example of a canal village, with over fifty listed buildings and many public houses around the wharf and heritage centre.

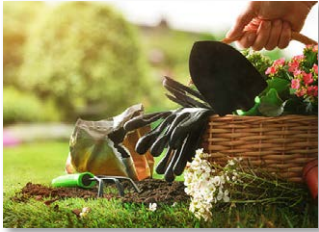


Stenson Marina

07391 408069 | www.stensonmarina.uk

Derby Road, Stenson, Barrow on Trent, DE73 7HL

Busy marina and boatyard on the Trent & Mersey Canal, including the former outbuildings of Stenson House which house a gastropub, hotel and coffee shop.



Stanton Nurseries

01283 214144 | www.stantonnurseries.co.uk

Woodland Road, Burton on Trent, DE15 9TH

Family-run garden centre and plant nursery producing a wide range of outdoor plants, plus compost, turf, feeds and seeds for the complete beginner and garden expert.



Swadlincote Family Golf Centre

01283 229839 | www.swadlincotegolfcentre.com

William Nadin Way, Swadlincote, DE11 0BB

Golf course with a variety of short and long holes and challenges designed to engage players of all abilities, plus an undercover driving range, with coaching and FootGolf available.



Statfold Country Park, Tamworth

01827 830389 | www.statfold.com

Ashby Road, Tamworth, B79 0BU

A unique park offering a range of adventure-filled activities like soft play, woodland trails, steam railway, museums, vintage fairground and more for a fantastic day out!

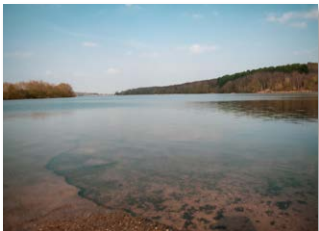


Swadlincote Snowsports Centre

01283 890089 | www.jnlswadlincote.co.uk

Sir Herbert Wragg Way, Swadlincote, DE11 8LP

Recreational skiing and snowboarding centre with lessons available throughout the year, also offering the 500m Cresta Run toboggan ride and fun sno-tubing inflatable rings.



Staunton Harold Reservoir, National Trust

01332 863822 | www.nationaltrust.org.uk/staunton-harold

Staunton Harold, Calke Road, Melbourn, DE73 8DL

Amidst rolling countryside, the woodland trails around the sparkling reservoir reveal a landscape shaped by nature and history, and provide links to the play area and Calke Abbey.



Swarkestone Nursery and Garden Centre

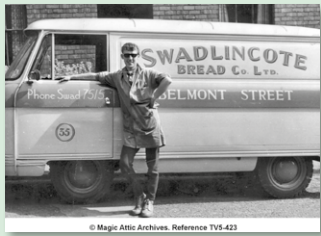
01332 700800 | www.swarkestonenursery.co.uk

Lowes Lane, Swarkestone, DE73 7GQ

Family-run plant nursery and garden centre with five generations of growing history offering an amazing range of plants, gifts and home goods, and an on-site restaurant.



Events and Experiences



The Magic Attic Archive, Swadlincote

01283 819020 | www.magicattic.org.uk
Sharpe's Pottery Museum, West Street, Swadlincote, DE11 9DG

A local history archive of newspapers, maps, photographs and artefacts situated within Sharpe's Pottery Museum and covering South Derbyshire and surrounding areas.



The Round House Gallery, Foston

01283 585348 | www.roundhousegallery.co.uk
The Firs, Uttoxeter Road, Foston, DE65 5DL

A contemporary studio ceramics gallery showcasing internationally-recognised potters, where each piece is selected for its craftsmanship by resident potter Philip Evans.



Willington Wetlands Nature Reserve, Derbyshire Wildlife Trust

01773 881188 | www.derbyshirewildlifetrust.org.uk/nature-reserves/willington-wetlands

Meadow Lane, Willington, DE65 6PD (Meadow Lane is an unmade lane off Repton Road on the Northern bank of the Trent just before the bridge over the river)

Teaming with bird life year-round, this former gravel quarry in the Trent Valley provides a 40-hectare wetland habitat for the first beavers back in Derbyshire in 800 years.



Woodgrow Horticulture, Findern

01332 517600 | www.woodgrowhorticulture.co.uk
Burton Road, Findern, Derby, DE65 6BE

Family-run landscaping suppliers and horticultural experts offering a large range of trees, shrubs and hedging plants, together with timber and landscaping products.



Creative arts festivals, woodland experiences, history talks and demonstrations, well dressings, sporting events and musical performances are just some of the fabulous events that take place here.

With Swadlincote's origins in ceramics production and Melbourne a centre for creative arts, there are lots of opportunities for making memorable experiences, including jewellery making and fused glass workshops.

Major annual events in South Derbyshire include the Bearded Theory and Bloodstock Festivals, Derbyshire County Show, the Festival of Fireworks, the FIM Superbike World Championship, Melbourne Arts Festival, the National Forest Walking Festival, Repton Festival, Swadlincote Festival of Leisure and Swadlincote Festival of Transport. Major event venues include Catton Hall, Donington Park and Elvaston Castle.

The National Forest is a fantastic setting for reconnecting with nature and enhancing your wellbeing – come and try forest bathing, learn bushcraft skills, walk with alpacas or join meditation or yoga sessions. For something more sporting, there is fishing, horse riding, climbing, archery, golf, flying lessons and much more.

Look out for the markets, food & drink festivals, vintage and antique fairs, and children's events hosted in our town centres and at our country estates and visitor attractions.



Explore more attractions in South Derbyshire and beyond at:
www.visitsouthderbyshire.co.uk

Explore great events and experiences in South Derbyshire at:
www.visitsouthderbyshire.co.uk

South Derbyshire Visitor Information Centre provides information for residents and visitors to South Derbyshire and the National Forest.

Our friendly team are able to assist with:


- ideas for places to visit
- suggestions for places to eat
- great places to shop
- details of events and what's on
- public transport information
- tickets for local events and transport
- advice on accommodation bookings


Contact us at:

South Derbyshire Visitor Information Centre
1 High Street, Swadlincote, Derbyshire, DE11 8JG, United Kingdom

📞 01283 223333 @ info@visitsouthderbyshire.co.uk

🌐 www.visitsouthderbyshire.co.uk

 Visit South Derbyshire

 Visit South Derbyshire

The Centre is open between 10am and 2pm,
Tuesday - Saturday (with variations for national holidays).

South Derbyshire
VISITOR INFORMATION
Centre

Whilst every effort has been taken to ensure the accuracy of the information supplied in this guide, Visit South Derbyshire cannot accept responsibility for any errors, omissions or subsequent changes, nor should any entry be deemed to be an endorsement of the establishment or activity. You are advised to confirm details before travelling. All information believed to be correct at the time of print.

Many thanks to all businesses and organisations supplying images for this Guide.